



MIGHTY



NEW THINKING. NEW POSSIBILITIES.

People's expectation toward individual mobility requires more than just a convenient means of transportation. The old understanding of cars has become outdated. A car represents individuals' lifestyles, and it became an integral part of their lives. At the same time, the automobile industry has experienced seismic change. Hyundai Motor Company has grown rapidly to become one of the largest automakers, backed by world class production capability and superior quality. We have now reached a point where we need a qualitative approach to bring bigger ideas and relevant solutions to our customers. This is an opportunity to move forward and we have developed a new brand slogan that encapsulates our willingness to take a big leap. Led by our new slogan and the new thinking underlying it, we will become a company that keeps challenging itself to unlock new possibilities for people and the planet.

Hyundai Motor Company
www.hyundai.com

GEN. LHD 1512 ENG.

Copyright © 2015 Hyundai Motor Company. All Rights Reserved.



MIGHTY BUILDS YOUR BUSINESS

Like a reliable partner always ready to work 24/7, the all-new Mighty helps build your business. From the smartly designed exterior to the wide, spacious cabin and sturdily built chassis, Mighty has been engineered to be the best-in-class: Every detail reflects Hyundai's commitment to innovation and quality. No matter what the job, Mighty is designed to help you get it done quickly, efficiently and comfortably so you're ready for your next customer.



BOLD & CONFIDENT DESIGN

SUPERIOR DESIGN AND FUNCTIONALITY

Stylish and practical, Mighty achieves a perfect balance of form and function. It's now easier than ever to access the cabin thanks to the wider cabin door and improved step design. Distinctively styled headlamps deliver more lumens than ever for better nighttime visibility while the dimensions and geometry of the radiator grille have been carefully calibrated to optimize engine cooling. Door mirrors, front and side glass have all been enlarged resulting in a much wider field of view that promotes safer, more confident driving. Thoughtful design puts Mighty ahead of the competition.



Taller, Wider Side Glass
A taller, wider side window provides the driver with a much better view for safer driving.

Cross-Type Design Identifies Mighty as a Tough and Solidly-Built Truck

The front end features a distinctive cross-type design which projects an image of strength and reliability. The cross pattern physically divides the front end into three major groups - the wide, low bumper, the headlights and the radiator grille - yet it manages to provide a strong sense of visual unity.



Stylish Headlamps
The two lamp assemblies are stacked vertically creating an impression of strength and authority.



Projection Fog Lamps & DRL
Fog lamp assembly includes projection lenses and daytime running lamps for better visibility especially in adverse weather conditions.



Grip-Type Door Handle
Horizontal handle is large and hefty and provides a secure grip even if wearing heavy gloves.

Wider Windshield Glass





WORKING + LIVING

There's a time to work hard and then there's a time to rest and relax. Mighty loves the challenge of a difficult job but its cabin provides the perfect mix of business and pleasure. From the new and improved driver seat to the tilt and telescopic steering wheel adjuster, good ergonomic design reduces much of the stress and strain of a tough, demanding job.

Its warm and inviting cabin provides a surprisingly high degree of comfort and quiet plus ample amounts of storage space—all helping make a tough job much easier. To ensure absolutely effortless operation, careful attention was paid to the smallest details inside the cabin such as the size and spacing of the foot pedals as well as the height and location of the gear shift lever.



WIDE & CONVENIENT

A SURPRISINGLY SPACIOUS AND WELL-EQUIPPED CABIN

From the comfortable driver seat which is designed to maximize support of lower back muscles to the intelligent layout of the instrument panel which is easy on the eyes, every design detail is guided by the assumption that a well-rested driver is a safer and more productive driver.



Horizontal Dashboard Layout

The instrumental panel features a new horizontal layout for a simpler, more modern look. Control switches are also larger and are logically organized for even easier and more intuitive operation.



Maintenance Alert System

This advanced monitoring system issues alerts whenever it's time for an oil change or other important maintenance.



Audio System

The top-end T800 AM/FM radio offers Bluetooth capability, plays MP3s, CDs and accepts USBs and AUX inputs.



Multi-Function Control Stalks

Light and turn signal control functions are right at your fingertips with these sturdily-built stalks.

3.5m³

Extra Spacious Cabin

Improvements to the cabin design start with increases to the key dimensions. Taller and longer, the new cabin has a pleasant spacious feel. With more headroom and legroom than ever to enjoy, driving is guaranteed to be more comfortable.

54°

Backrest Reclining Angle

The Super Cab driver seat offers up to 225mm of travel adjustment while the backrest tilts up to 54 degrees for unmatched comfort.



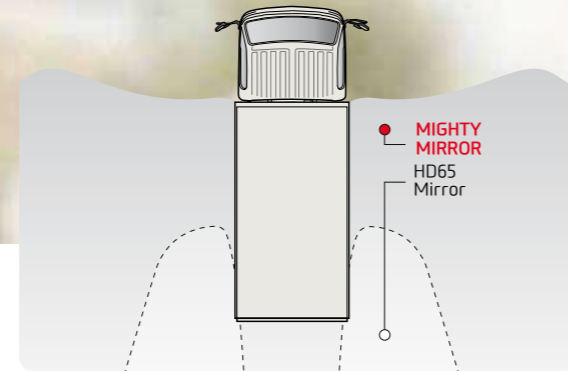
MAX VISIBILITY & EASY ENTRY

A BETTER VIEW FOR SAFER DRIVING

Bigger glass, smaller A-pillars and new headlights, all contribute to better visibility which makes the new Mighty so much safer to drive. Redesigned side mirrors shrink the size of the blind spot to provide wider coverage for safer lane changes. Daytime running lights and fog lamps with projection-type lenses make it easier to see and to be seen when driving in poor weather conditions.

Full Coverage Mirrors

Drivers will see much more with these new side mirrors. The main mirror is now 10mm taller while the newly added sub-mirror is convex-shaped to maximize rear-view coverage. This dual mirror set-up eliminates the blind spot area and provides a much wider field-of-view for safer, more confident driving.

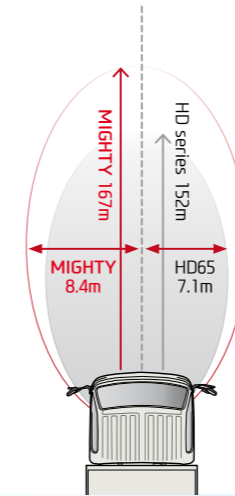


Improved Side Window View

To achieve better lines of sight in all directions, the door windows are slightly larger than before. The driver will quickly notice how even a very minor change can make a huge improvement in side visibility. The combination of larger side windows and a better mirror design helps promote more confident and safer driving.

Longer, Wider Beam Pattern

The new, tall-style headlamps include a major redesign of the reflective mirror optics resulting in significant improvements to the beam pattern. Compared to their predecessors, these newest headlamps cast a significantly longer and wider beam pattern than before thus making nighttime driving much safer.



Easy Entry Steps & Door Courtesy Lamps

Strong steps sit lower and are wider and deeper while perforations maximize traction. Courtesy lamps add another welcome touch.

Easy Ingress & Egress

One repetitive task that truck drivers face each day is climbing a step to get in and out of their trucks. To minimize the effort required, Hyundai engineers have lowered the height of the step while lengthening and widening it for a more secure footing. A larger door cutout opening also helps.



Enhanced Forward Visibility

Mighty drivers enjoy a bigger and better forward view thanks to two factors. First, the crashpad features a new horizontal design that minimizes height and which has been mounted as low as possible. Secondly, the windscreen rake angle is slightly closer to the vertical position thus helping maximize the forward view angle.

+2.2°



Smart Key

The Smart Key provides the convenience of remote locking and unlocking of the doors. This Smart Key also includes a security anti-theft feature which prevents the engine from being started without the insertion of the Smart Key into the ignition switch.





SUPERIOR COMFORT

CLASS-LEADING ROOMINESS AND MORE STORAGE AREAS

Mighty's cabin is designed to surpass expectations. First, generous interior dimensions allow the driver to stretch out and relax in complete comfort. Secondly, it is equipped with an ample number of storage compartments to help keep the driver well-organized. Auxiliary power outlets include both 12v- and 24v-type for maximum versatility.

43.4 Liters

More Storage Space
Mighty offers more than a sufficient amount of storage options. A tally of the various compartments adds up to 43.4 liters in total storage space.

Reclines up to **52°**



Reclining Passenger Seat and Folding Console
The Super Cab passenger seat reclines up to a maximum of 52 degrees (degrees in Standard Cab). For added convenience, the center seat backrest can be folded into a fully flat position to offer a handy 6 liter storage compartment. It's covered by a large tray top doubles as a writing surface.



Roof Console
The volume of this handy overhead space measures at an impressive 21 liters.



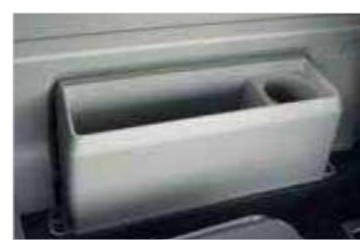
Glove Box
At 7.6 liters, this generously sized compartment keeps your travel essentials within easy reach.



Cup Holders
With these cleverly designed cup holders, quenching your thirst while driving has never been easier.



Seat Back Console
The center seat backrest folds down to offer a tray which doubles as a writing surface.



Rear Panel Console
Mounted on the rear panel, this 4.9 liter console comes with a bottle holder.



Super Cab Rear Space
Super Cab brings the advantage of extra rear space for storing tools or other essential items.



Double Cab
The rear of the Double Cab provides comfortable seating for three more of your crew.



VERSATILE + STRONG

Whatever your type of business, Mighty is the perfect partner helping you deliver the best results. This versatile workhorse is ready to tackle any job, big or small. The bare chassis edition can be easily adapted to diverse applications thanks to the matrix of pre-drilled holes. By moving the engine and the rear of the cab forward by 50mm creates maximum load deck space and increases variety of wheelbase lengths so you can choose the perfect size for your business. When you need the job done right, the versatile Mighty gets it done with reliability and efficiency.

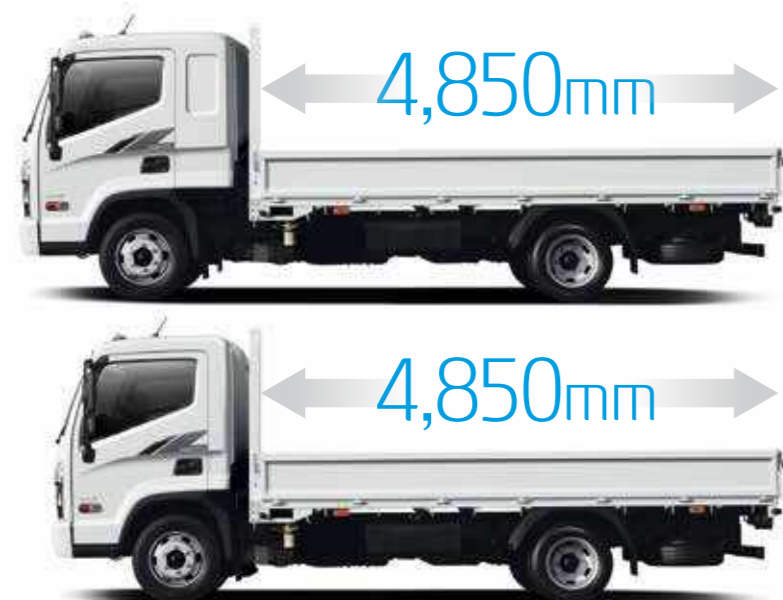
Mighty's is manufactured with proprietary Hyundai-made steel to guarantee rigorous high standards of rigidity and durability. The all-steel backbone features a ladder-frame configuration with crossmember reinforcement and other optimized design features which enhance Mighty's strength and durability. With Mighty, you can carry maximum payloads with absolute confidence and safety.

WHATEVER YOUR PAYLOAD

READY FOR ANYTHING, MIGHTY CARRIES MORE PER LOAD FOR FEWER TRIPS

Classified according to gross vehicle weight, the Mighty range spans five different models from the 5.5-ton EX5 to the top-of-the-line EX9 which features a 4,850mm-long deck and 8.2-ton GVW rating. The reinforced rear axle has a 6,600kg maximum weight ratings so your cargo rides safely without worry. Powertrains are tailored to match respective cargo hauling capacities.

Super Cab:
The best in Comfort and Cargo Efficiency



EX9

Extra Long Wheel Base

Extra long wheelbase(for Super Cab)
Mighty at its mightiest, the Extra Long provides maximum load space.

4,400mm

Long Wheel Base

4,050mm

Optimized Super Cab Wheelbase

With room for your crew and a longer 4,050mm wheelbase, the Super Cab offers the best of both worlds. Standard Cab wheelbase measures 3,850mm.

EX5

Rated at 5.5T GVW, the entry-level Mighty features a Standard Cab only and a 2,850mm wheelbase.



EX6

Rated at 6.5T GVW, the EX6 comes in three wheelbase lengths and choice of Standard, Super or Double Cab.



EX7

GVW rated at 7.2T, the EX7 comes in Standard or Super Cab plus extra-long wheelbase editions.



EX8

The 7.8T GVW-rated EX8 offers a choice of four different wheelbases and two Cab types.



New EX9

With 4 wheelbases and two Cabs to choose from, this ultimate Mighty is GVW rated at 8.2T.



Standard Cab

Super Cab

Double Cab

350mm

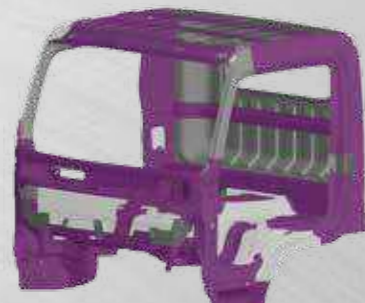
SOLID & ROBUST

BUILT TOUGH FOR UNSURPASSED DURABILITY AND RELIABILITY

Even at maximum cargo carrying capacity, Mighty has been designed to travel confidently over the bumpiest of roads. Its ladder-frame chassis can safely withstand high torsional and flexing forces because it is built with a high-quality steel produced by Hyundai Motor Group affiliate Hyundai Steel. Also cross-member reinforcement helps resist twisting and bending.

Zinc-galvanized
79%

For rust-resistance and extended durability, zinc-galvanized steel has been specified for 79% of the cabin structure. To achieve higher standards of strength, rigidity and improved crashworthiness, high tensile strength steel has been applied to 38% of the cabin shell.



High Tensile Strength Steel



Zinc-Plated Steel

Engine moved forward
« 50mm

By moving the engine forward 50mm, extra load space has been created. This has also allowed the cab to be mounted lower, achieving a lower center of gravity and reducing vibrations. These are just some of the benefits of Mighty's all-new chassis.



80°

Enlarged door-open angle
(68° → 80°)



Easy to Customize

For easy upper body customization, the ladder frame features a matrix of pre-drilled 11mm holes spaced 50mm apart.



Wide Mud Guards

Front and rear mud guards prevent stones and other road debris from chipping the paintwork.



Easy Winter Starting

The fuel system includes pre-heater to prevent icing and promote fast starts in sub-zero temperatures.



Improved Junction Box

New design allows for quick replacement of burnt out fuses and easy checks to detect current leakage.



EFFICIENT + RELIABLE

The D4 family of diesel engines are at the heart of Mighty and they beat with efficiency and impressive power. Compliant with EURO emission standards, they run powerfully and are paired with a choice of five- or six-speed manual transmissions. For more efficient delivery of power and better distribution of cargo loads, the rear axle has been reinforced. To achieve a better ride and easier handling, the suspension features new, longer tapered leaf springs and gas-charged shock absorbers.

The roads are always unpredictable but Mighty helps minimize risk and dangers with its various safety features that provide protection and peace of mind. Safety begins with greatly improved headlamps and better cabin visibility. New, larger drum brakes shorten braking distances and the optional four-wheel discs with advanced Vehicle Dynamic Control provide the ultimate in braking performance. Mighty's new Lane Departure Warning System is a reliable driving partner keeping an extra set of eyes on the road to help prevent mishaps.

MORE MILES WITH LESS LITERS

EFFICIENT, POWERFUL AND RELIABLE



Developed with Hyundai's own technology, the D4 family of diesel engines have earned a legendary reputation for their durability, reliability and economy. Fed by the very latest common rail direct injection system, Hyundai diesels squeeze the maximum amount of energy out of each drop of fuel and provide fantastic pulling power across a wide rpm range.

170ps@2500rpm

Mighty is powered by a variant of the phenomenally popular D4 family of CRDi engines displacing 3.9L. The straight-four powerplant is mated to a 5-speed manual transmission (6-speed in the case of the 170ps D4GA17) to drive the rear wheels. Depending on displacement and the EURO emission certification rating, Mighty D4-class powerplants generate anywhere from 120ps in the case of the EURO-1 D4DC up to a maximum of 170ps in the example of the EURO-5 rated D4GA17 engine.

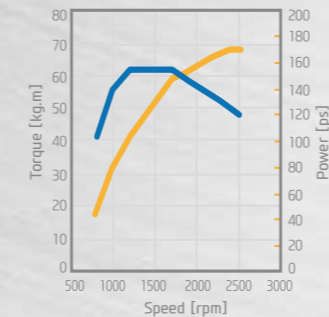


T60S6 : 6-speed manual transmission

T60S5 : 5-speed manual transmission

T60S5/6
Advanced 5-speed or 6-speed manual transmission
* 6-speed available only with F-engine

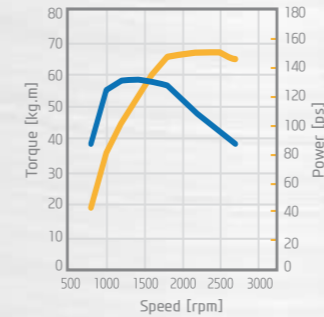
EURO 5



D4GA17

- Displacement : 3,933cc
- 170ps / 2,500rpm
- 62kgm / 1,400rpm

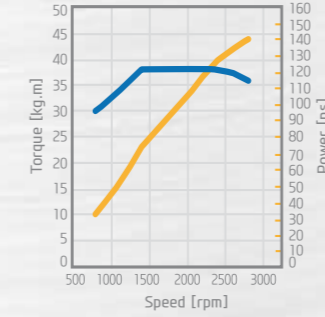
EURO 4



D4GA15

- Displacement : 3,933cc
- 150ps / 2,500rpm
- 59kgm / 1,400rpm

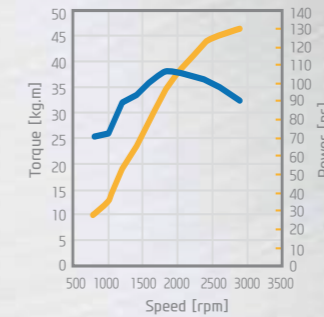
EURO 3



D4DD

- Displacement : 3,907cc
- 140ps / 2,800rpm
- 38kgm / 1,600rpm

EURO 2



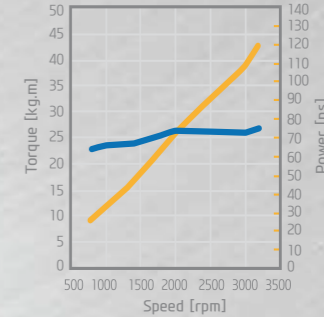
D4DB13

- Displacement : 3,907cc
- 130ps / 2,900rpm
- 38kgm / 1,800rpm

D4DB-d (Other Euro2 Engine)

- Displacement : 3,907cc
- 120ps / 2,900rpm
- 30kgm / 2,000rpm

EURO 1



D4DC

- Displacement : 3,907cc
- 120ps / 3,200rpm
- 26kgm / 2,000rpm

D4DB14 (Other Euro1 Engine)

- Displacement : 3,907cc
- 155ps (Gen) / 2,900rpm
- 38kgm / 1,800rpm



Improved Rear Suspension

New rubber dampers replace the older metal-type to deliver greatly improved rear suspension performance.



Anti-Vibration Dampers

Vibration has been reduced by the application of gas-type shock absorbers and wider spacing between the leaf springs.

NVH Countermeasures

Mighty engineers have devised numerous other countermeasures to achieve significant reductions in noise, vibration and harshness. These include the lowering the cab floor, installation of new engine mounts and the adoption of a single-structure frame for secure support of the crashpad. Other measures include the use of double-seal weatherstripping to reduce wind noise and a new dual rail system installed inside the doors for rattle-free support of the side windows.

MIGHTY, YOUR SMART GUARDIAN

SMART SAFETY SYSTEMS PROTECT YOU AGAINST THE UNPREDICTABLE

Hyundai takes an uncompromising approach to the issue of safety. From the newly adopted Vehicle Dynamic Control which reduces rollover risk to the anti-locking 4-wheel disc brakes with the very latest Electronic Stability Control and Traction Control, Mighty raises truck driving safety to a higher standard than ever. There's even a Lane Departure Warning System that will alert to the driver in the event the driver unintentionally drifts out of his lane.

LDWS

Lane Departure Warning System

This cutting-edge safety system relies on vision sensor that continually monitors the parallel paint strips to ensure the vehicle stays within the driving lane. If a lane departure is not accompanied by turn signal activation then LDWS triggers an alert for the driver to take corrective action.

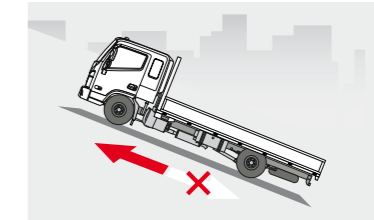


VDC Vehicle Dynamic Control

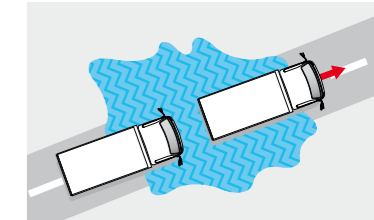
VDC provides the ultimate in braking power to prevent a loss of control and maintain directional stability when dangerous conditions are detected. Employing an array of sensors to monitor vehicle speed, direction of travel, the steering angle and the amount of tire traction, VDC relies on highly advanced software to distribute braking power among the individual wheels. It can even automatically cut the engine throttle if a dangerous condition is detected.



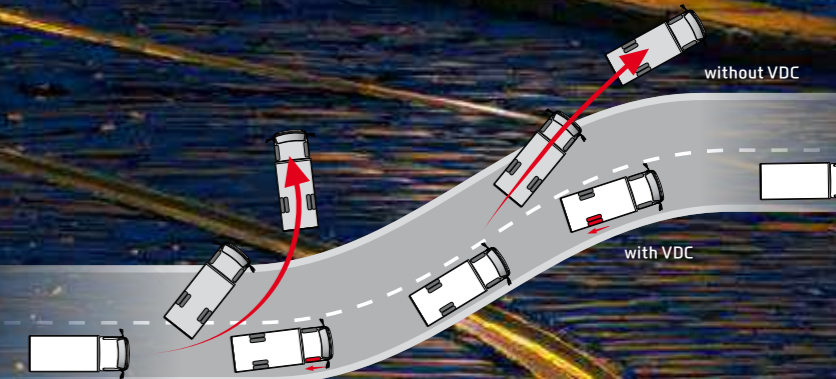
High-power Assist Brake (HAB)
Recognizes panic braking and the automatically boosts hydraulic brake pressure to maximize stopping power.



Easy Hill Start (EHS)
EHS prevents accidental 'roll back' when releasing the brake to proceed a steep slope.



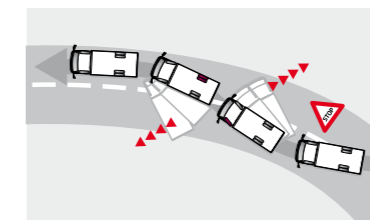
Engine Drag Control (EDC)
During engine braking, EDC prevents the driven wheels from locking and skidding on slippery surfaces.



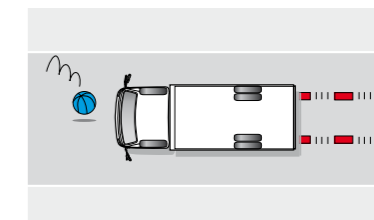
-4.6m

Shorter Braking Distances

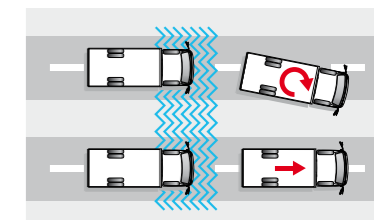
The 4-wheel disc brakes (optional) with Vehicle Dynamic Control maximize braking power. Compared to its predecessor, Mighty requires 4.6m less to come to a full stop from 60km/h.
*EX6 (HD65) tested at 60km/h



Electronic Stability Control (ESC)
ESC uses selective braking of individual wheels and engine intervention to help maintain directional stability.



Anti-lock Braking System (ABS)
ABS helps maintain directional stability and decreases stopping distances on slippery pavement.



Traction Control System (TCS)
TCS prevents wheel spin and loss of traction and is particularly helpful when accelerating from a stop.



MIGHTY BUILDS YOUR BUSINESS SUCCESS

MORE MIGHTY



T800 audio

- Radio
- USB + AUX + Bluetooth + CDP + MP3 + IPOD



M300 audio

- Radio
- USB + AUX



M200 audio

- Radio + AUX



Digital tachograph

The optional tachograph is an invaluable management tool for maximum safety and efficiency.



Adjustable steering wheel

The tilt angle and distance can be easily adjusted to ensure the perfect driving position.



Center console

The center fascia includes a nicely sized console for storage convenience.



Parking console

This console features a storage bin and cupholder for the driver's convenience.



Sun visor

The visor is extra-wide for better protection against glare and includes a ticket holder.



Audio remote control

The remote audio controls help the driver keep both hands on the wheel for better safety.



Auto cruise control

Simplified design keeps the vehicle at a steady speed to help minimize fuel consumption.



Disc pad wear indicator

Disc brakes come with a warning indicator to indicate when it's time to install new pads.



Passenger AUX

The AUX jack accepts inputs from portable music players and other audio devices.



Detachable upper front panel

The detachable design allows for quick inspections and easier servicing.



Long stay mirror

The long-stay mirrors eliminate the blind spot permitting safer lane changes. Optional.



Front marker lamps

Dual front marker lamps shine brightly to boost visibility and safety.



Micro Roof Antenna

Great radio reception from a small, aerodynamic antenna that fits exactly to the style of Mighty.



Passenger air conditioning

Controls are positioned centrally between the driver and front passenger for the maximum convenience of both.



Deluxe map lamps

Enjoy better lighting with these deluxe map lamps which are available with top trim only.



Room lamp

The large room lamp provides excellent coverage throughout the cabin.



Standard map lamp

A very handy feature to have when trying to read a map at night. Available as an option with standard trim.



Rear lamps

Large rear lamps provide excellent illumination and are easy to service.



Tool box

The sturdy, side-mounted tool box is easily accessible and lockable.



16" Alloy wheels

Mighty looks even more handsome and stylish with the optional lightweight alloy wheels.



16" Steel wheels

Highly durable steel wheels are built to withstand punishment.

SPECIFICATIONS

MODEL		ITEM	EX5		EX6					
Cab	Width		Wide		Wide					
	Length		Standard		Standard		Super		Double	
Deck height			High		High					
Wheelbase			Short		Short	Medium	Long	Medium	Long	Medium
Applied Engines			D4DC / D4DB-d		D4DC/D4DB-d/ D4DD/D4GA17	D4DC/D4DB-d/D4DB13/D4DD/ D4GA15/D4GA17		D4DC/D4DB-d/D4DB13/D4DD/D4GA15/D4GA17		
Dimensions (mm)										
Wheelbase			2,850	2,850	3,400	3,850	3,600	3,950	3,400	
Overall (Cargo)	Length		-	-	6,210	-	6,510	-	6,210	
	Width		-	-	2,080/2,180	-	2,080/2,180	-	2,080	
	Height		-	-	2,345	-	2,345	-	2,345	
Overall (C/Cab)	Length		5,300	5,300	6,110	6,620	6,370	6,870	6,110	
	Width		2,028 (Door handle)		2,028 (Door handle)					
	Height		2,290		2,295 (7.00R16 Tire), 2,275 (205/75R17.5 Tire)					
Wheel tread	Front		1,690		1,680 (DC/DB-d engine), 1,695 (DD/GA engine)					
	Rear		1,655		1,495 (Disc brake : 1,575)					
Overhang (Cargo)	Front		-	-	1,125	-	1,125	-	1,125	
	Rear		-	-	1,685	-	1,785	-	1,685	
Overhang (C/Cab)	Front		-	-	1,125					
	Rear		-	1,325	1,585	1,645	1,645	1,795	1,585	
Deck Size	Length		-	-	4,340	-	4,340	-	3,340	
	Width		-	-	1,960/2,060	-	1,960/2,060	-	1,960	
	Height		-	-	380	-	380	-	380	
	Floor Height		-	-	1,040	-	1,035	-	1,040	
Deck offset			-	-	540	-	440	-	440	
*C.A (Cab to rear axle)			2,260	2,260	2,810	3,260	2,710	3,060	1,810	
*C.E (Cab to end of frame)			3,520	3,520	4,330	4,840	4,290	4,790	3,330	
Min. ground clearance			220	185	185	195	185	195	185	
Minimum turning circle (m)			5.3	5.3	6.3	7.5	6.7	7.7	6.3	
Weight (kg)										
Empty vehicle weight (Cargo)			-	-	3,030	-	3,070	-	3,090	
	Front		-	-	1,735	-	1,760	-	1,690	
	Rear		-	-	1,295	-	1,310	-	1,400	
Curb weight (Chassis Cab)			2,365	2,510	2,495	2,575	2,535	2,595	2,680	
	Front		1,595	1,630	1,650	1,675	1,695	1,715	1,685	
	Rear		770	880	845	900	840	880	995	
**Max gross vehicle weight			5,500		6,500					
	Front		2,530		2,400					
	Rear		2,970		4,100					

Annotations
1) Empty vehicle weight and curb weight shown are to 3.5% variation to allow for production tolerance. 2) Empty vehicle weight and curb weight include weight of oil, fuel, coolant and spare tire carrier & bracket, spare tire but exclude standard tool set.
3) The vehicle specifications may differ per country. 4) Hyundai Motor Company reserves the right to alter the specifications, equipment or options or discontinue the models at any time without prior notice.

MODEL		ITEM	EX7				
Cab	Width		Wide				
	Length		Standard		Super		
Deck height			High				
Wheelbase			Short	Long	Extra-Long	Long	Extra-Long
Applied engines			D4DC/D4DB14/D4DB13	D4DC/D4DB14/D4DB-d/D4DB13		D4DC/D4DB14/D4DB-d/D4DB13	
Dimensions (mm)							
Wheelbase			2,850	3,850	4,200	4,050	4,400
Overall (Cargo)	Length		5,370	6,720	-	7,020	-
	Width		-	2,180	-	-	2,180
	Height		-	2,360	-	-	2,360
Overall (C/Cab)	Length		5,300	6,620	7,370	6,870	7,370
	Width		2,028 (Door Handle)				
	Height		2,310 (7.50R17.5 Tire), 2,285 (205/75R17.5 Tire)				
Wheel tread	Front		215/75R Tire : 1,675, 205/75R Tire : 1,680(DC/DB) / 1,695(GA)				
	Rear		1,650				
Overhang (Cargo)	Front		1,125		-	1,125	-
	Rear		1,395	1,745	-	1,845	-
Overhang (C/Cab)	Front		1,125				
	Rear		1,325	1,645	2,045	1,695	1,845
Deck size	Length		3,500	4,850	-	4,850	-
	Width		-	2,060	-	2,060	-
	Height		-	380	-	380	-
	Floor Height		1,115	1,125	-	1,120	-
Deck offset			410	735	-	635	-
*C.A (Cab to rear axle)			2,260	3,260	3,610	3,160	3,510
*C.E (Cab to end of frame)			3,520	4,840	5,590	4,790	5,290
Min. ground clearance			210	220	220	220	220
Minimum turning circle (m)			5.3	7.5	8.2	7.9	8.6
Weight (kg)							
Empty vehicle weight			3,025	3,240	-	3,260	-
	Front		1,720	1,820	-	1,825	-
	Rear		1,305	1,420	-	1,345	-
Curb weight (Chassis Cab)			2,565	2,640	2,675	2,660	2,685
	Front		1,655	1,705	1,765	1,745	1,795
	Rear		910	935	910	915	890
**Max gross vehicle weight			7,200				
	Front		2,600				
	Rear		4,600				

* C.A & C.E : In case of standard cab D4GA engine, due to the protruding engine part reduced length 65mm.
* Weight : If you select fuel tank 150ℓ, weight increases 55kg.
** Max. GVW includes the front & rear axle loads based on the permissible tire load.

SPECIFICATIONS

MODEL		ITEM		EX8					
Cab	Width	Standard			Wide			Super	
	Length								
Deck height		Short			High			Extra-Long	
Wheelbase		Long		Extra-Long		Long		Extra-Long	
Applied engines		D4DC/D4DB14/D4DD/D4GA17		D4DC/D4DB14/D4DB13/D4DD/D4GA15/D4GA17		D4DC/D4DB14/D4DB13/D4DD/D4GA15/D4GA17			
Dimensions (mm)									
Wheelbase		2,850	3,850	4,200	4,050	4,400			
Overall (Cargo)	Length	5,370	6,720	-	7,020	-			
	Width	2,180		-		2,180		-	
	Height	2,360		-		2,360		-	
Overall (C/Cab)	Length	5,300	6,620	7,370	6,870	7,370			
	Width				2,028 (Door handle)				
	Height				7.50R16 : 2,310, 205/75R17.5 : 2,285, 215/75R17.5 : 2,295				
Wheel tread	Front	215/75R Tire : 1,675, 205/75R Tire : 1,680(DC/DB), 1,695(DD/GA)							
	Rear	1,650							
Overhang (Cargo)	Front	1,125		-		1,125		-	
	Rear	1,395	1,745	-		1,845		-	
Overhang (C/Cab)	Front				1,125				
	Rear	1,325	1,645	2,045	1,695	1,845			
Deck Size	Length	3,500	4,850	-		4,850		-	
	Width	2,060		-		2,060		-	
	Height	380		-		380		-	
	Floor height	1,115	1,125	-		1,120		-	
Deck offset		410	735	-		635		-	
C.A (Cab to rear axle)		2,260	3,260	3,610	3,160	3,510			
C.E (Cab to end of frame)		3,520	4,840	5,590	4,790	5,290			
Min. ground clearance		210	220	220	220	220			
Minimum turning circle (m)		5.3	7.5	8.2	7.9	8.6			
Weight (kg)									
Empty vehicle weight (Cargo)		3,035	3,250	-		3,270		-	
	Front	1,725	1,825	-		1,830		-	
	Rear	1,310	1,425	-		1,440		-	
Curb weight (Chassis Cab)		2,575	2,650	2,685	2,670	2,695			
	Front	1,660	1,710	1,770	1,750	1,800			
	Rear	915	940	915	920	895			
*Max gross vehicle weight					7,800				
	Front				3,100				
	Rear				4,700				

Annotations
1) Empty vehicle weight and curb weight shown are to 3.5% variation to allow for production tolerance. 2) Empty vehicle weight and curb weight include weight of oil, fuel, coolant and spare tire carrier & bracket, spare tire but exclude standard tool set.
3) The vehicle specifications may differ per country. 4) Hyundai Motor Company reserves the right to alter the specifications, equipment or options or discontinue the models at any time without prior notice.

MODEL		ITEM		EX9					
Cab	Width	Standard			Wide			Super	
	Length								
Deck height		Short			High			Extra-Long	
Wheelbase		Long		Extra-Long		Long		Extra-Long	
Applied engines		D4DC/D4DB14/D4DD/D4GA17		D4DC/D4DB14/D4DB13/D4DD/D4GA15/D4GA17		D4DC/D4DB14/D4DB13/D4DD/D4GA17			
Dimensions (mm)									
Wheelbase		2,850	3,850	4,200	4,050	4,400			
Overall (Cargo)	Length	-	6,720	-		7,020		-	
	Width	-		2,180		-		-	
	Height	-		2,360		-		-	
Overall (C/Cab)	Length	5,300	6,620	7,370	6,870	7,370			
	Width				2,028 (Door handle)				
	Height				7.50R16 : 2,310, 205/75R17.5 : 2,285, 215/75R17.5 : 2,295				
Wheel tread	Front	215/75R Tire : 1,675, 205/75R Tire : 1,680(DC/DB), 1,695(DD/GA)							
	Rear	1,650							
Overhang (Cargo)	Front	-		1,125		-		1,125	
	Rear	-	1,745	-		1,845		-	
Overhang (C/Cab)	Front				1,125				
	Rear	1,325	1,645	2,045	1,695	1,845			
Deck size	Length	-	4,850	-		4,850		-	
	Width	-		2,060		-		-	
	Height	-		380		-		-	
	Floor height	-	1,125	-		1,120		-	
Deck offset		-	735	-		635		-	
C.A (Cab to rear axle)		2,260	3,260	3,610	3,160	3,510			
C.E (Cab to end of frame)		3,520	4,840	5,590	4,790	5,290			
Min. ground clearance		210	220	220	220	220			
Minimum turning circle (m)		5.3	7.5	8.2	7.9	8.6			
Weight (kg)									
Empty vehicle weight (Cargo)		-	3,250	-		3,270		-	
	Front	-	1,825	-		1,830		-	
	Rear	-	1,425	-		1,440		-	
Curb weight (Chassis Cab)		2,575	2,650	2,685	2,670	2,695			
	Front	1,660	1,710	1,770	1,750	1,800			
	Rear	915	940	915	920	895			
*Max gross vehicle weight					8,200				
	Front				3,100				
	Rear				5,100				

* C.A & C.E : In case of standard cab D4GA engine, due to the protruding engine part reduced length 65mm.
* Weight : If you select fuel tank 150ℓ, weight increases 55kg.
** Max. GVW includes the front & rear axle loads based on the permissible tire load.

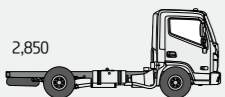

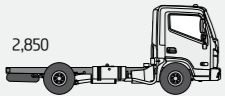
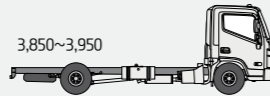
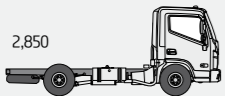

ENGINE LINEUP

MODEL		EX5	EX6				EX7				EX8/9		
Variant		Cargo	Cargo			Dump	Cargo			Dump	Cargo		
Wheelbase		Short	Short	Medium	Long		Short	Long	Extra-Long		Short	Long	Extra-Long
Euro1	D4DC	120ps / 26kgm	●	●	●	●	●	●	●	●	●	●	
	D4DB14	155ps / 38kgm					●	●	●	●	●	●	
Euro2	D4DB-d	120ps / 30kgm	●	●	●	●		●	●	●		●	
	D4DB13	130ps / 38kgm						●	●	●		●	
Euro3	D4DD	140ps / 38kgm		●	●	●	●	●	●	●	●	●	
Euro4	D4GA15	150ps / 59kgm			●	●						●	
Euro5	D4GA17	170ps / 62kgm			●	●						●	

Max. Power and Torque of engine may vary according to each country.

DIMENSION AND CABIN VARIANT

[Unit : mm]

Sub	GVW	Short Wheelbase	Medium Wheelbase	Long Wheelbase	Extra-Long Wheelbase	Standard Cab	Super Cab	Double Cab	
EX5	5.5t	2,850 				●			
EX6	6.5t	2,850 	3,400~3,600 	3,850~3,950 		●	●	●	
EX7	7.2t	2,850 		3,850~4,050 	4,200~4,400 	●	●		
EX8	7.8t	2,850 		3,850~4,050 	4,200~4,400 	●	●		
EX9	8.2t	2,850 		3,850~4,050 	4,200~4,400 	●	●		

EXTERIOR COLORS



White (Solid Color)



Jade (Solid color)



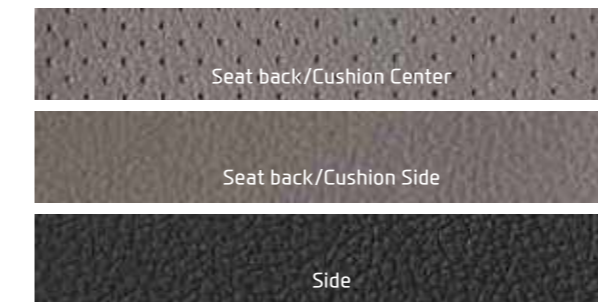
Inky-blue (Solid color)



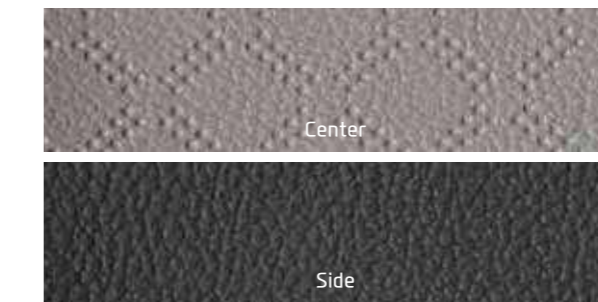
Silver (Metallic color)

SEAT TRIMS

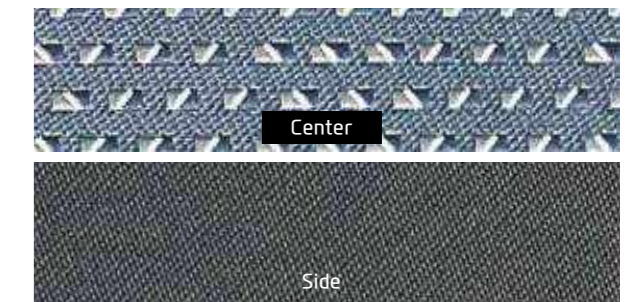
Artificial leather-high



Artificial leather



Semi-cloth



- The above values are results from internal testing and are subjected to change after validation.
- Some of the equipment illustrated or described in this catalog may not be supplied as standard equipment and may be available at extra cost.
- Hyundai Motor Co. reserves the right to change specifications and equipment without prior notice.
- The color plates shown may vary slightly from the actual colors due to the limitations of the printing process.
- Please consult your dealer for full information and availability on colors and trims.